



PATTON

WATCHES

PLACE VENDÔME
PARIS

PRESS KIT

PATTON WATCHES

PLACE VENDÔME
PARIS



PATTON P42

Challenge extreme depths
Challenge extreme cold
Challenge time

PATTON P42 watches owe their reputation of solidity to their high-tech development process and their thorough laboratory testing. Our watchmakers' values are changeless: precision, solidity, reliability.

Each PATTON watch is assembled, controlled and adjusted with the greatest of care in our Swiss workshop before being awarded the "PATTON P42 expertise" seal of approval. Upon production completion, each watch is given an individual identification number.

Real-life trials...

Our P42 watches are then handed over to extreme professionals who carry out further in situ trials to validate our research and laboratory tests. Prolonged deep-sea dives, extreme cold and altitude, centrifugal force and acceleration...

Keep up to speed with our real-life trials
on pattonwatches.com

Regularly visit patton-watches.com and discover
PATTON watches' new challenges and records.



Model featured: PATTON P42 H, black dial, PVD case, rubber strap



PATTON P42 HYPERBARE

SWISS-MADE

The P42 HYPERBAR's movement and all its internal elements are permanently immersed in a liquid developed from a specific high density oil. This very technical and particularly complex process enables this watch to withstand abyssal depths. A small air bubble is permanently present in the case as compensation.

Waterproof to 1000 metres - 3300 feet.

Black PVD-coated brushed 316L stainless steel case.

Screw-down crown.

Reinforced crown protection.

Thick sapphire glass.

7-coat JUMBO LUMINO dial numbers.

Rubber, carbon or white waterproof spinnaker cloth strap.

Swiss-made Quartz movement.

Lithium battery.



Model featured: PATTON P42 C, black dial, PVD case, alligator strap



PATTON P42 CHRONOGRAPHE

SWISS-MADE

Waterproof to 100 metres - 300 feet.

Brushed and polished 316L stainless steel or black PVD case.

Screw-down crown.

Reinforced crown protection.

Thick sapphire glass.

Multifunction dial.

1/1 second chronograph.

30 second counter.

Small second.

SPLIT and ADD functions.

12 hour counter.

Date.

Rubber, metal, carbon, leather, white waterproof spinnaker cloth or alligator strap.

Swiss-made Quartz movement.



Model featured: PATTON P42 I, carbon dial, stainless steel case, carbon strap



PATTON P42 IMMERSION

SWISS-MADE

The P42 IMMERSION is born of extensive PATTON research to ensure it can withstand all the extremes: reinforced watertightness, extreme cold protection, locked calibration of movement, stainless steel case.

Waterproof to 330 metres - 1000 feet.

Brushed 316L stainless steel case.

Screw-down crown.

Reinforced crown protection.

Thick sapphire glass.

7-coat LUMINO dial numbers.

Rubber, metal, carbon, white waterproof spinnaker cloth, leather or alligator strap.

Swiss-made Quartz movement.

Lithium battery, lifetime ~10 years.

PATTON WATCHES

PLACE VENDÔME
PARIS



YANN ELIES,
Ambassador of PATTON WATCHES.

The skipper severely injured in the latest Vendée Globe Challenge has taken to the seas once again after several months' convalescence.

Yann has just won his first two races "Le défi des Ports" and the "Transmanche". He magnificently bagged second place in the single-handed FIGARO 2009 race, outrunning 50 other competitors, in what was hands-down the best FIGARO race since its creation.

Wearing a PATTON P42 CHRONOGRAPH so as to race with a watch to match his achievements, Yann proves once again seamen's interest in this remarkable chronometric tool.

PATTON WATCHES

PLACE VENDÔME
PARIS



PATTON WATCHES CHALLENGE

A P42 HYPERBAR was tested in real-life diving conditions using one of the world's largest hydrostatic pressure tanks.

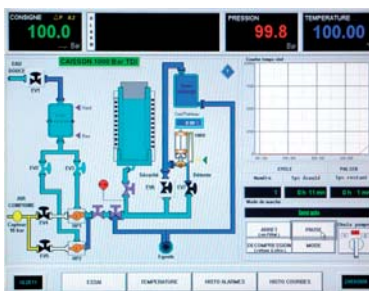
The P42H was immersed by the BREST-IROISE team of IFREMER engineers in a giant hyperbaric tank filled with water and locked with hydraulic cylinders in order to stand up to the incredible pressure simulating very great depths.

The tank was computer operated from an adjoining room. We decided with the IFREMER engineers to increase the pressure by 10 bars per minute, i.e. 100 metres/m and to level out at 1000 metres for 10 minutes before decreasing the pressure at the same speed.

The verdict was revealed when the tank was opened: the PATTON P42H was brought up in perfect working condition, set as before its pressurisation down to the second.

What is most incredible in this trial is the phenomenal force at these depths; at 1000 metres the pressure is 100 kg/cm², representing over a tonne in weight pressing on the sapphire glass of our P42.

Through these trials in real-life conditions, we once again validated the design and manufacture of our P42H watches and bring you the reassurance of wearing one of the most watertight watches in the world.



PATTON WATCHES

PLACE VENDÔME
PARIS

PATTON WATCHES CHALLENGE

A PATTON P42I was set into a crevice on the Aiguille du Midi in the Mont Blanc mountain range at an altitude of 3800 metres.

by a team of Chamonix mountain guides. It remains to date in extreme cold conditions. It will be left in the heart of the mountain as long as it continues to operate.

The P42I's watertightness, as well as its assembly and calibration, make it the most versatile chronometric instrument in the PATTON range.

Our team of guides check that it is in good working order every time they pass near the site. The movement of this watch, extremely low in energy consumption, is equipped with a lithium battery whose expected lifetime is ~10 years...



PATTON WATCHES

PLACE VENDÔME
PARIS

PATTON WATCHES CHALLENGE

A PATTON P42H attached to the wreck of a cargo ship at the bottom of the INDIAN OCEAN.

The watch is fixed to a wire inside the ship's bridge. Once a month, deep-sea divers check that the case is watertight and the movement is functioning correctly.

To date, the P42 HYPERBAR remains watertight at over 1000 metres and continues to give the exact time without any variation since its immersion.

The expected lifetime of the watch's lithium battery is approximately ten years. We will keep you updated on the evolution of this underwater adventure.



PATTON WATCHES

PLACE VENDÔME
PARIS

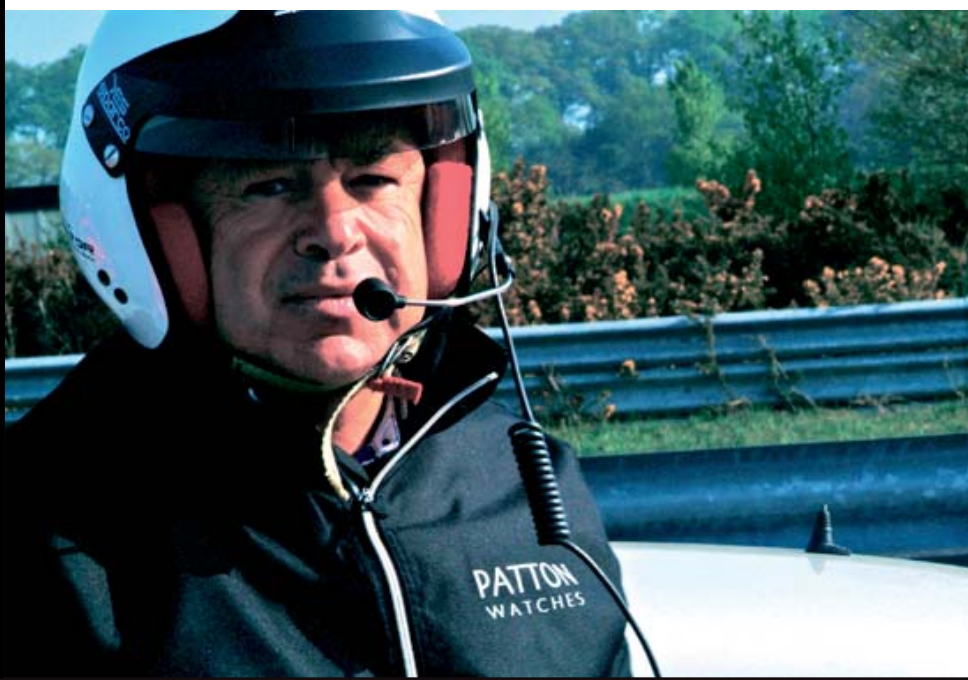
PATTON WATCHES CHALLENGE

A PATTON P42 CHRONOGRAPH was fixed inside the alloy of a famous German race car...

3 drivers, speeds of up to 240 km/h... The P42C successfully withstood the incredible centrifugal force to which it was subjected. 6 hours later, it was still bang on time down to the second.



See the video of this challenge on
pattonwatches.com



PATTON WATCHES

PLACE VENDÔME
PARIS

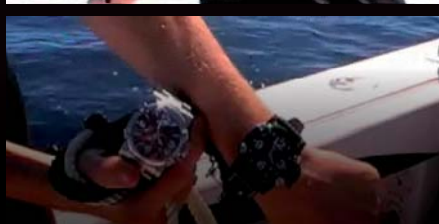
PATTON WATCHES CHALLENGE

A PATTON P42 IMMERSION towed at 100 km/h behind a speed boat...

Towed through the sea on the end of a 35-metre rope at over 55 knots, 100 km/h, by a 36-foot DONZI POWER-BOAT with a roaring 550 horsepower outboard motor, our PATTON P42 stood up to outrageously violent shocks.

At this speed, the water is hard as concrete and our Patton watch hit and bounced off the surface impressively sharply.

When it was reeled in after two long runs off Brégançon Fort, the PATTON P42i was damage-free and bang on time.



See the video of this challenge on
pattonwatches.com



PATTON WATCHES

PLACE VENDÔME
PARIS

PATTON WATCHES CHALLENGE

Under Sébastien Josse's racing yacht

A P42i has been installed for several weeks under the bow of Sébastien Josse's 60-foot IMOCA racing yacht.

Thousands of miles for yacht delivery work from Antwerp then racing in the PETIT NAVIRE Grand Prix, Artemis Challenge and the Fastnet Race (3 races in which Sébastien bagged first place) did nothing to disturb the functioning of our PATTON watch.

Designed to endure the worst conditions on the roughest seas, our P42i will continue its adventure fastened to the base of the bowsprit stay, throughout the season of races between France and England, culminating with the Transat Jacques Vabre.

In this position, our Patton watch receives tens of thousands of, often extremely violent, shocks and once again proves its extraordinary and unfailing solidity and waterproofing.

Thank you to Sébastien JOSSE and his crew for taking part in this new Patton Challenge throughout their racing season.



See the video of this challenge on
pattonwatches.com



PATTON WATCHES

PLACE VENDÔME
PARIS



See the video of this challenge on
pattonwatches.com

PATTON WATCHES CHALLENGE

A P42 CHRONOGRAPH fixed to the outside of a parachute jump plane

In 6 hours:

17 take-offs, 17 landings. Altitude: 4500 metres.

Temperatures: down to -9°C in the air, $+24^{\circ}\text{C}$ on the ground.

17-minute ascent, nose-down descent in less than 3 minutes at 8000 feet/minute...

The plane landed before the parachutists...

Thermal shock, vibrations and variations in pressure were no obstacle to the accuracy and waterproofing of our P42 C.



PATTON WATCHES

PLACE VENDÔME
PARIS

INQUIRIES:

PATTON WATCHES
NCI VENDOME
16, Place Vendôme
75001 PARIS
FRANCE
+33 (0)9 71 34 44 71
www.patton-watches.com
info@patton-watches.com

Why fit quartz movements in such high quality watches?

Simply because the springs and oscillating masses of mechanical movements are very fragile and cannot withstand great variations in temperature, heavy vibrations or repeated shocks. Furthermore, automatic or wind-up watches are strongly advised against for sports in which the forearms play an important role (golf, tennis, squash, jet ski, motor boating, motocross...)

The decision to use high-tech Swiss-made quartz movements with a lithium battery seemed like the obvious choice. Only a quartz movement can ensure such long term accuracy and reliability in watches put to severe test.

PATTON P42 watches all rise to the challenge and are designed to be by your side in all situations, even the most extreme.

Follow the adventures and new challenges of PATTON P42 WATCHES on pattonwatches.com

PATTON P42 PUBLIC PRICES:
From 725 to 1550 €

PATTON

WATCHES

PLACE VENDÔME
PARIS

pattonwatches.com